



WIZEVER CLUTCH SERIES CATALOG



TOGMAX GROUP

Reliable, Efficient & Value-added - Your Partner from China

Website: <https://www.togmax.com>, WhatsApp: 008618660227161, Email: mike@togmax.com

公司简介

Company Profile



专久 WIZEVER®

1

Company History

- **Togmax Group's** WIZEVER clutches production factory was founded in **1954**, joined Dongfeng Motor Corporation in 1982.

2

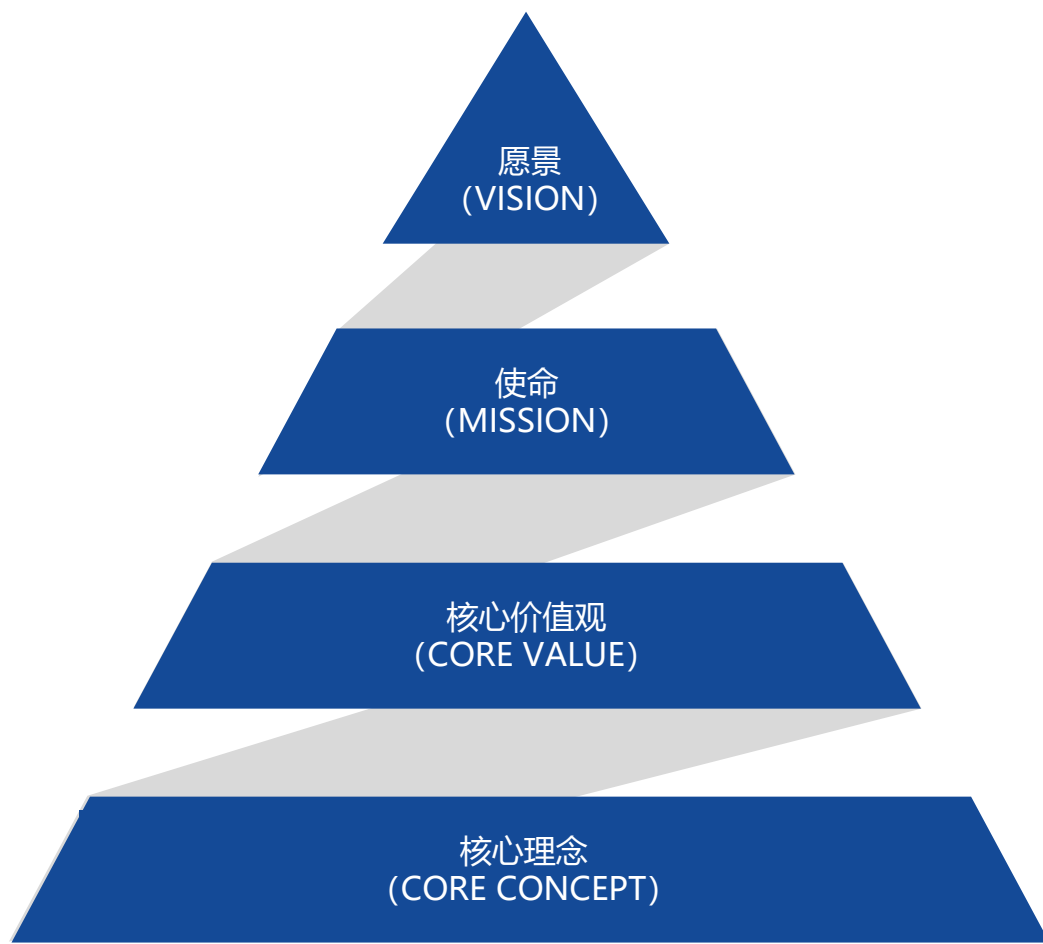
Company Assets

- The factory now has assets of **300 million RMB** and **390** employees, with an annual production capacity of **5 million** sets of clutches, **600,000** sets of dual mass flywheels and flywheel dampers. There are more than **2,000** kinds of products, covering more than **20** series of micro, sedan, light, truck and bus. In the past three years, it has contributed **39.79 million RMB** of tax revenue to the local economy, ranking in the **front** of the industry.

3

Awards & Accomplishments

- Our factory has been awarded as "**Top 100 Most Competitive** Chinese Auto Parts Enterprises", "**Leading Enterprise** of Clutch Industry", Regional "**Outstanding Contribution Enterprise**", "**Municipal Labor Medal**" of the city. "It is also the **main contributor** to China's automotive clutch industry standard."



Vision

- Become a leading domestic automotive transmission supplier.
- Dedicated to the research, development, design, and manufacturing of automotive clutches in order to become the leading brand in the clutch industry in China by 2030.

Mission

- Dedicated to providing superior clutch products for automotive transmission.
- We are committed to providing safe, high quality and green transmission system products with a responsible attitude to consumers, OEMs and society by implementing management innovation, technological innovation, energy saving and environmental protection, stable and reliable quality in accordance with the customer-centric principle..

Core Value

- Passion: energetic, enterprising, chasing dreams
- Transform: Keeping up with the times, continuous innovation and surpassing
- Sincerity: Keeping promises, treating people sincerely, and working honestly
- Sharing: Teamwork, cooperation, self-interest altruism

Core Concept

- Market concept, quality concept, management concept, safety concept, knowledge concept
- Cost concept, technology concept, innovation concept, talent concept, lean concept

专利技术

Patented Technology

专久 WIZEVER®



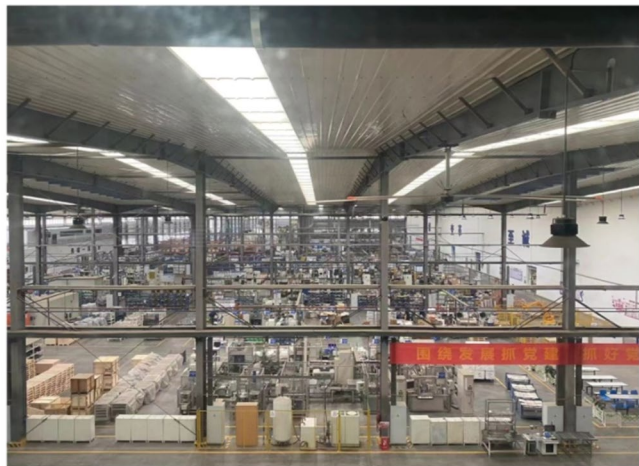
◆187 Patent Licensing

● 9 Invention Patents ✦ 172 utility models ✦ 6 Design Patents

设备与设施

Equipment And Facilities

专久 WIZEVER®



产品交付

Product Delivery

专久 WIZEVER®



01

Provide loading components for OEM market - 42 major customers - direct sales model - auto transport, rail, air



02

Provide aftermarket vehicle assembly parts - 46 major customers - direct sales model - auto transport, rail, air

业务模式

Business Model

专久 WIZEVER®



30%

Passenger Car Clutch

Mainly applied to:

- Sedans
- Small MPV automatic transmission models.

Main supporting markets and brands:

- Chang'an Ford,
- Shen Long Peugeot Automobile
- Dongfeng series cars



60%

Commercial Vehicle Clutch

Mainly applied to:

- Medium and heavy truck models.

Main supporting markets and brands:

- Dongfeng Commercial Vehicle; FAW Jiefang Auto; JAC Motor; Beiqi Foton Automobile, etc.
- **Engine market:** Weichai, Yuchai, Yunnai, etc.



10%

Dual Mass Flywheel

Mainly applied to:

- SNV, MPV models.

Main supporting markets and brands:

- Audi; Volkswagen; Jiangling; Great Wall; Dongfeng Xiaokang; Changfeng Cheetah; Huatai Automobile, etc..

Talents

The technical centre has **86** engineers:
36 R&D engineers, **33** process engineers,
17 project managers,
including **1** doctor, **7** masters and **63**
undergraduates.

Established Hubei Doctoral Workstation
in 2013.

Software

CATIA V5.0-2stations,
Pro/E, CAXA, CAD,
MATLAB

Patent

Independently owns **187** national
technology patents.
No less than **1** invention patent per
year.
More than **20** utility model patents.

Product

New project development: about **30** new
products/year.

Wizever Clutch R&D centre is a provincial
technical centre

Extensive cooperation with local universities.

Professional and advanced testing and
experimental centre for Dongfeng,
Shenlong, Futian and Yuchai designated clutch
experimental base.

质量体系认证

Certificate of Quality System

专久 WIZEVER®



- 1999: ISO9001
- 2001: QS9000
- 2003: TS16949/2002, Updated in 2012;
- TUV Certified
- 2005: National product quality and safety standards - 3C certificate
- 2010: ISO14001 / OHSAS18001
- TUV Certified
- 2017 IATF16949:2016 certification change
- IATF 16949 approved in 2020 :2016 Certificate Replacement
- ISO14001 approved in 2021 : 2015 & ISO45001:2018 certificate replacement

战略合作伙伴

Strategic partners

专久 WIZEVER®

Passenger Car



福特



东风标致



东风雪铁龙



东风小康



长安汽车



长安商用



北汽



猎豹汽车



五菱宏光



华泰汽车



吉利汽车



长安铃木



比亚迪

Commercial Car



一汽锡柴



东风汽车



江淮汽车



福田汽车



东风柳州



江铃汽车



联合卡车



上汽大通



南京依维柯



九龙汽车



济南重汽



三环专汽



厦工三重



徐工集团

Engine



玉柴机器



潍柴动力



福田康明斯



江西五十铃



东风康明斯



昆明云内



东风朝柴



东风汽车



上柴动力



东安汽发



潍柴动力



江苏四达集团



扬柴

Bus



宇通客车



海格客车



金龙客车



金旅客车



中通客车



上海申龙



江铃晶马



江淮客车



黄海汽车



扬州亚星



大宇集团



申沃客车

产品介绍——乘用车

Product Introduction - Passenger Cars

专久 WIZEVER®



Repair Kit

- The cost-effective choice, reducing the failure rate of inconsistency in product matching.
- A grease kit and gloves are included with the whole series, and the adjustment tools and guide bearings are gradually introduced.
- To satisfy users with professional, efficient, and timely service, to reduce rework, and to relieve their concerns.



Dual Mass Flywheel

- Effective isolation of engine crankshaft torsional vibration.
- Less noise and better fuel economy.



Self-Adjusting Clutch

- Low separation force, more stable;
- Better comfort and more wear reserve for longer clutch life.

产品介绍——乘用车

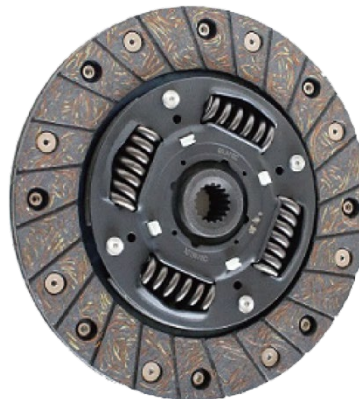
Product Introduction - Passenger Cars

专久 WIZEVER®



Cover Assembly

- We can independently design and develop a full range of clutch cover assemblies of 160-430mm diameter with push and pull structure;
- Well-equipped product testing equipment, with a national laboratory.



Clutch Plate

- We can independently design and develop a full range of clutch plates of 160-430mm in diameter with normal structure and pre-vibration mitigation structure;
- Strong R&D capability, with provincial R&D centre.



Bearings

- Independently designed,
- With the production capacity of more than 600 models of mechanical release bearings and hydraulic release bearings.

The product range is rich, covering more than **95%** of the market vehicle models. Among them, there are more than **200** kinds of clutch kits, more than **10** kinds of dual mass flywheels, more than **40** kinds of self-adjusting clutch, over **160** kinds of mechanical bearings and over **50** kinds of hydraulic bearings, and the supporting OEMs cover the field of micro cars, sedans and pickups.

产品介绍——商用车

Product Introduction - Commercial Vehicles

专久 WIZEVER®



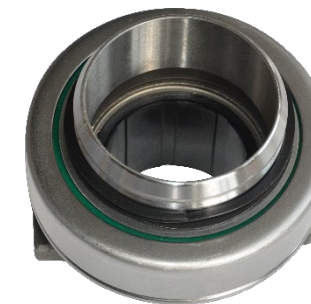
Cover Assembly

- We can independently design and develop a full range of clutch cover assemblies of 160-430mm diameter with push and pull structure;
- Well-equipped product testing equipment, with a national laboratory.



Clutch Plate

- We can independently design and develop a full range of clutch plates of 160-430mm in diameter with normal structure and pre-vibration mitigation structure;
- Strong R&D capability, with provincial R&D centre.



Bearings

- Independently designed,
- With the production capacity of more than 600 models of mechanical release bearings and hydraulic release bearings.

The product range is rich, covering more than **90%** of the market vehicle models. Among them, there are more than **200** sets of high-end blue package products and more than **100** sets of economic and environmental protection green package products. The products can cope with various extreme road conditions and different types of vehicles. Professional matching with National III, National IV and National V models.

产品应用案例——轿车系列

Product Application Case - Car Series

专久 WIZEVER®



Φ180mm Clutch



Customer	Vehicle Type	Engine type	Maximum torque/rpm	Displacement
Chang'an	Benben MINI	CB 10	86N.m	1.0 L
Suzuki	Beidou	YD2	90 N.m	1.0 L
Geely	LC	479	86N.m	1.0 L
SAIC-GM-Wuling	Rong Guang	465Q	102 N.m	1.2 L

产品应用案例——轿车系列

Product Application Case - Car Series

专久 WIZEVER®



Φ190mm Clutch

Customer	Vehicle Type	Engine type	Maximum torque/rpm	Displacement
Chang'an	Benben MINI	JL474Q2	110 N.m	1.3L
Suzuki	Landy	YK5	90 N.m	1.3 L
Geely	LC /Free Cruiser	479Q	128 N.m	1.3 L
Chery	QQ6	S21-481Q	118 N.m	1.3 L



产品应用案例——轿车系列

Product Application Case - Car Series

专久 WIZEVER®



Φ200mm Clutch



Customer	Vehicle Type	Engine type	Maximum torque/rpm	Displacement
Dongfeng-Citroen	C-Elysée	TU5JP4	147 N.m	1.6L
Dongfeng-Citroen	Picasso	TU5JP4	147 N.m	1.6L
Dongfeng-Citroen	C-Quatre	TU5JP4	147 N.m	1.6L
Dongfeng-Citroen	Fukang	TU5JP4	147 N.m	1.4L

产品应用案例——轿车系列

Product Application Case - Car Series

专久 WIZEVER®



Φ200mm Clutch



Customer	Vehicle Type	Engine type	Maximum torque/rpm	Displacement
Dongfeng-Citroen	C-Elysée	TU5JP4	147 N.m	1.6L
Dongfeng-Citroen	Picasso	TU5JP4	147 N.m	1.6L
Dongfeng-Citroen	C-Quatre	TU5JP4	147 N.m	1.6L
Dongfeng-Citroen	Fukang	TU5JP4	147 N.m	1.4L
Dongfeng-Citroen	Peugeot 206	TU5JP4	147 N.m	1.6L
Dongfeng-Citroen	Peugeot307	TU5JP4	147 N.m	1.6L
Dongfeng-Citroen	Peugeot408	TU5JP4	147 N.m	1.6L

产品应用案例——轿车系列

Product Application Case - Car Series



Φ200mm Clutch

Customer	Vehicle Type	Engine type	Maximum torque/rpm	Displacement
Dongfeng-Citroen	C-Elysée	TU5JP4	147 N.m	1.6L
Dongfeng-Citroen	Picasso	TU5JP4	147 N.m	1.6L
Dongfeng-Citroen	C-Quatre	TU5JP4	147 N.m	1.6L
Dongfeng-Citroen	Fukang	TU5JP4	147 N.m	1.4L
Dongfeng-Citroen	Peugeot 206	TU5JP4	147 N.m	1.6L
Dongfeng-Citroen	Peugeot 307	TU5JP4	147 N.m	1.6L
Dongfeng-Citroen	Peugeot 408	TU5JP4	147 N.m	1.6L
Chang'an	Yuexiang	475Q	138 N.m	1.5L
BYD Auto (Mitsubishi Motor)	F3	471Q	134 N.m	1.6L
DongFeng	S30/H30	TU5JP4	147 N.m	1.6L
Chery	481Q	QQ6	118 N.m	1.3L
Geely	Yuanjing/Haijing	479Q	149 N.m	1.6L
FAW Haima Automobile	Haifuxing	471Q	134 N.m	1.6L

产品应用案例——轿车系列

Product Application Case - Car Series

专久 WIZEVER[®]



产品应用案例——轿车系列

Product Application Case - Car Series

专久 WIZEVER®



Φ215mm Clutch



Customer	Vehicle Type	Engine type	Maximum torque/rpm	Displacement
China Motor	JunJie (DongAn-Mitsubishi)	4G93	175 N.m	1.8 L
Hafei	Saibao-Serie 5 (DongAn-Mitsubishi)	4G93	175 N.m	1.8 L
GAC	Qibing (DongAn-Mitsubishi)	4G93	175 N.m	1.8 L
Soueast Motor	S30/H30	4G93	175 N.m	1.8 L
Dongfeng Liuzhou Motor	Fengxing (DongAn-Mitsubishi)	4G93	175 N.m	1.8 L

产品应用案例——轿车系列

Product Application Case - Car Series

专久 WIZEVER®



Φ220mm Clutch



Customer	Vehicle Type	Engine type	Maximum torque/rpm	Displacement
Changan Ford	FOCUS	CAF483Q0	161 N.m	1.8 L

产品应用案例

Product Application Case

专久 WIZEVER®



Φ230mm DMF



Φ240mm DMF

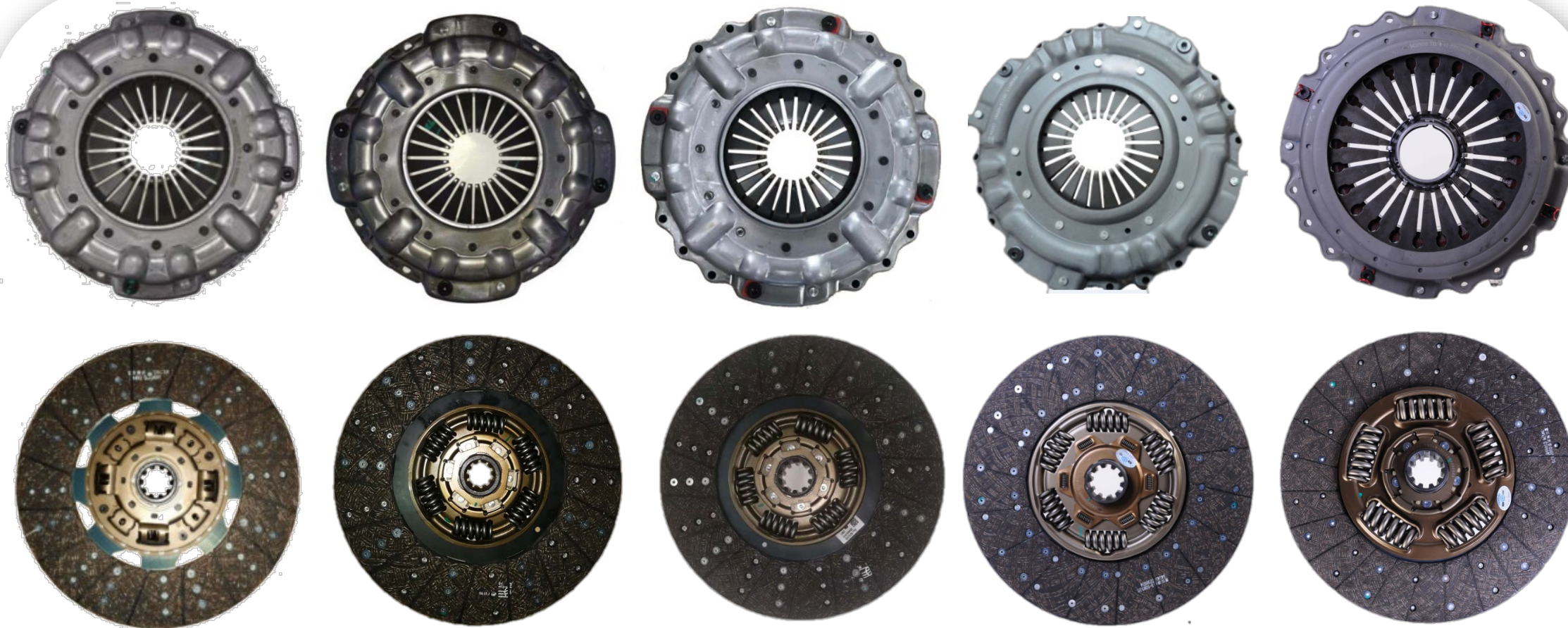


Customer	Vehicle Type	Engine type	Clutch	Power
HAVAL H6	SUV	4G15B/1.5T	230mmDMF	105Kw/ 210N.m
Hawtai	SUV Baolige/Shengdafei	OED483Q /2.0T / 4L	240mmDMF	110Kw/ 310N.m

产品应用案例——客车系列

Product Application Case - Bus Series

专久 WIZEVER®



Φ350mm- Φ430mm Clutch Assembly

产品应用案例——客车系列

Product Application Case - Bus Series

专久 WIZEVER®



Yutong Bus



Zhongtong Bus



Youngman Bus



DAEWOO
Bus



Huanghai Bus



King Long Bus



Golden Dragon Bus



Higer Bus



SUNWIN Bus



Sunlong Bus



Wanxiang Bus



Ankai Bus

产品应用案例——商用车系列

Product Application Case - Commercial Vehicle Series

专久 WIZEVER®



Φ330mm- Φ350mm Clutch Assembly



产品应用案例——商用车系列

Product Application Case - Commercial Vehicle Series



Φ395mm Clutch

Vehicle Type	Engine type	Maximum torque/rpm	Maximum power/rpm	Displacement
Dongfeng	ISDe180 30	900N.m/1200-1700rpm	161(KW) /2500(rpm)	4.5L
FAW Group	CA6DF3-22E3	900N.m/1400rpm	162(KW) /2300(rpm)	6.7L
Sinotruk	YC6J190-30	700N.m/1200-1700rpm	140(KW) /2500(rpm)	6.5L



产品应用案例——商用车系列

Product Application Case - Commercial Vehicle Series

专久 WIZEVER®



Φ430mm Pull-type Clutch

Vehicle Type	Engine type	Maximum torque/rpm	Maximum power/rpm	Displacement
Dongfeng	ISZ560 51	2500N.m/1900rpm	412kw/1900rpm.	13L
FAW Group	CA6DM3-55E51	2600N.m/1200-1300rpm	407kw/1800rpm.	12.5L
Sinotruk	MC13.54-50	2500N.m/1000-1400rpm	397kw/1900rpm.	13L



产品应用案例——商用车系列

Product application case - commercial vehicle series

专久 WIZEVER®

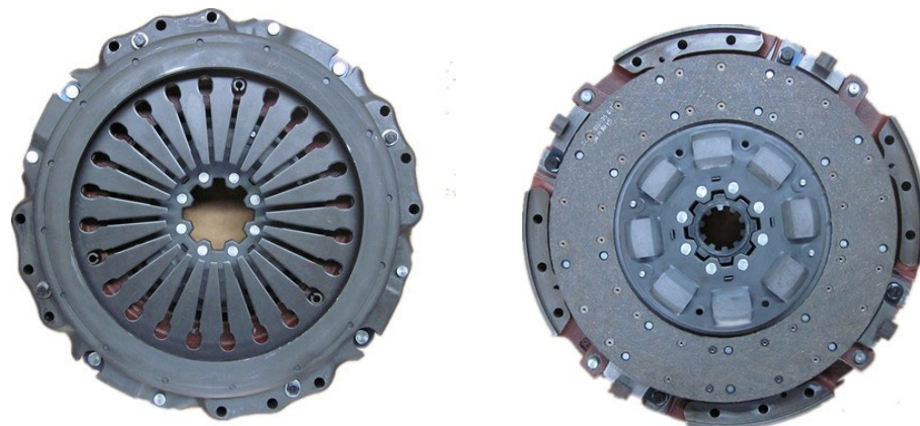
Vehicle Type	Engine type	Maximum torque/rpm	Clutch	Gearbox
Dongfeng Tianjin	Cummins/Yuchai 6M/Renault 11L	870-1379 lb.ft (1180-1870Nm)/ 1100~1700rpm	17" (430mm) Pull-Type	FAST 12JS & 16JS
J5&HUM-WYNE	Weichai & Xichai	870-1220lb.ft (1180-1650Nm)/ 1100~1700rpm	17" (430mm) Pull-Type	FAST 9JS & 12JS & 16
C&C Trucks	Weichai - 500HP	1550lb.ft (2100Nm/ 1500rpm)	17" (430mm) Pull-Type	FAST 12JS
JAC	Weichai /Xichai	1330lb.ft (1800N.m)/1400rpm	430mm拉式	FAST 9JS&12JS&16JS



产品应用案例

Product Application Case

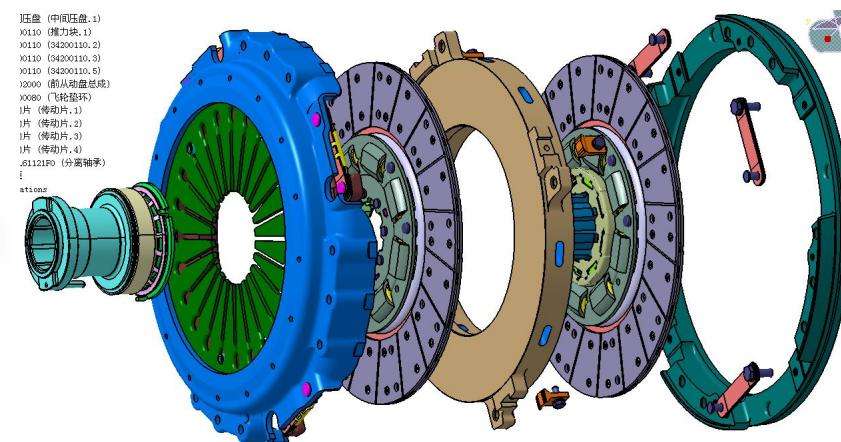
专久 WIZEVER®



Double Disc-400mm

400 Double Disc Clutch

- Pull Type
- Torque : 4100N.m



Engine

- Power : 440HP~600HP
- Torque : 2700 N.m
- Spline dimensions : SAE 2" x 10

展望未来

Look forward

专久 WIZEVER®



TOGMAX GROUP

Reliable, Efficient & Value-added - Your Partner from China

Together for Mutual Value Maximum

Website: <https://www.togmax.com>

WhatsApp: 008618660227161

Email: mike@togmax.com

